

New!

Helpful Addition to Perelandra Garden and Environment Processes: **Climate Change Balancer**

This is for all you folks who are caring for the environment by working with [*The Perelandra Garden Workbook*](#).

Just two years ago, Machaelle developed and introduced [*Climate Change Balancer*](#) to us. It's a remarkably supportive, comprehensive Perelandra Solution that addresses the daily impact and challenges caused by climate change, globally and locally, on our physical, emotional, mental and soul [PEMS] levels. And up to now, it has been used for people and animals.

But as Machaelle wisely noted when the question came up recently, "Variables change, and so should we."

So, we're sharing this new recommendation with all of you:



Include Climate Change Balancer when testing the processes in *The Perelandra Garden Workbook*.

This is an optional, strongly encouraged addition. We expect that you will appreciate what it adds to your environmental balancing and your gardens.



Updating Your *Garden Workbook*

This is one of those times your *Garden Workbook* will feel like a WORKBOOK!

We'll wait here while you go and get your book, and a pen or pencil. Best to do it right now, so when you are working with the processes, testing for balancers and stabilizers, you won't waste time searching for this information.

Okay, do you have your *Workbook* out?

Handwrite the words "Climate Change Balancer" where you find lists of the other Solutions within the instructions on the following pages:

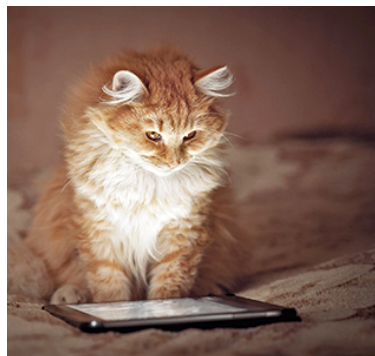
- ☞ Co-Creative Gardener's Kit, p. 86
- ☞ Using ETS and EoP for Obstacles, p. 87 (Step 1)
- ☞ Co-Creative Gardener's Kit 2.0, p. 103
- ☞ Nature Healing Process for Garden Wildlife, pp. 217-218 (Steps 6-7)
- ☞ Energy Cleansing Process, p. 268 (To Prepare)
- ☞ Energy Cleansing Process Steps, p. 270 (Step 8)
- ☞ Battle Energy Release Process, p. 281 (To Prepare)
- ☞ Battle Energy Release Process Steps, pp. 282-283 (Step 6)
- ☞ Troubleshooting 2.1 Process, p. 297 (To Prepare)
- ☞ Troubleshooting 2.1 Chart Sample, p. 299 (Nature Shift)
- ☞ Troubleshooting 2.1 Chart, p. 301 (Nature Shift)
- ☞ Nature Shift for General Garden Use, p. 303 (Step 2)
- ☞ Nature Healing Process for Garden Wildlife, pp. 306-307 (Steps 5-6)
- ☞ Energy Cleansing Process, p. 307 (To Prepare)
- ☞ Energy Cleansing Process Steps, pp. 309-310 (Step 8)
- ☞ Battle Energy Release Process, p. 312 (To Prepare)
- ☞ Battle Energy Release Process Steps, p. 314 (Step 6)



Release the Climate Change Balancer Solution from its own clean glass bowl as described for any Nature Shift.

Is your *Garden Workbook* an ebook?

Save this email or [save this PDF](#) on your device where your *Workbook* ebook is located. Then you will be able to flip to the information easily when using your *eWorkbook*. If you have a PDF reader program that allows for highlights or notes, you can add "Climate Change" as a note on each of the pages listed above.



Update! Repairing Damage and Restoring Balance

As our climate changes, extreme weather events and wildfires are more frequent and common. What can you do to address the damage to land, plants, pond, trees, soil and air in your home environment? [These guidelines](#) have now been updated to include using Climate Change Balancer.



[Gardening Series](#)

Perelandra, Ltd. | perelandra-ltd.com

Ordering

1-800-960-8806 or 1-540-937-2153

Monday-Thursday 9-5 ET

Copyright © 2025 Perelandra, Ltd. All rights reserved.

Questions about co-creative gardening or the *Garden Workbook*? We're here to help!

Call our Question Hot Line on Wednesdays about this or about using any other Perelandra product or process.

Question Hot Line
1-540-937-3679

Wednesday 10-8 ET

